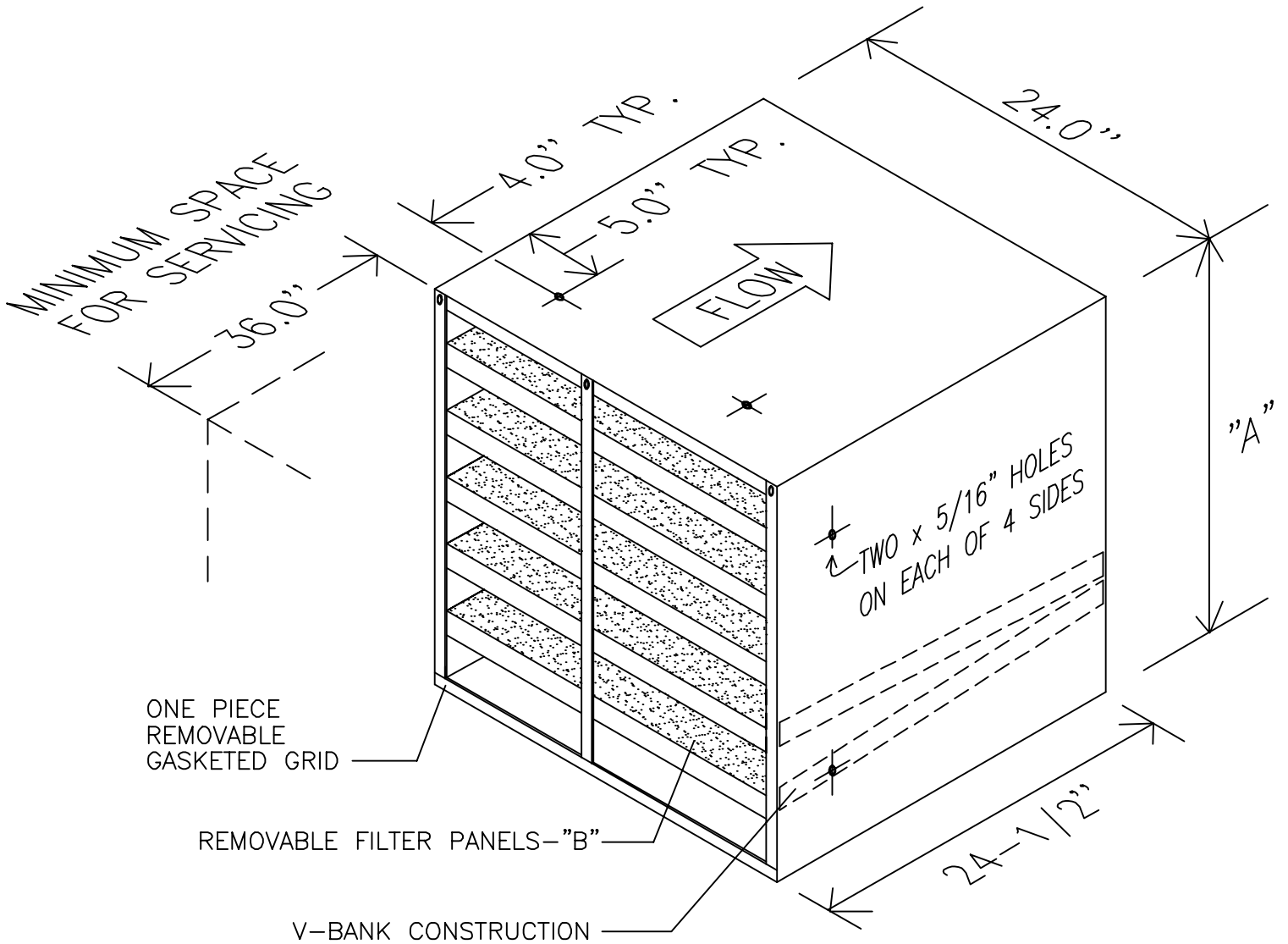


2000 CFM FRONT ACCESS FILTER HOUSING



MODEL NO.	"A"	"B"	CARBON	FLOW @ 0.22" W.G. ΔP*
FA-2000	24	10	90 lbs.	2000 CFM*
FA-2000H	12	5	45 lbs.	1000 CFM*

* AT 500 FPM DESIGN VELOCITY

FEATURES

- Can be installed as front or rear access
- Units bolt together to form banks of any capacity; will fit many existing holding frames.

WEIGHTS FOR MODEL 2000-FA			
PANEL FILL MEDIA	GAC	CI	ZK6
WEIGHTS (LBS.):			
EMPTY HOUSING	110	110	110
QTY. 10 TRAYS AND MEDIA	140	152	215
TOTAL WEIGHT	250	262	325

MATERIALS OF CONSTRUCTION

HOUSING - 14 GAUGE
COLD ROLLED CARBON STEEL
BLACK POWDER COATED FINISH

PROPRIETARY DRAWING			
DRAWING MAY NOT BE USED OR REPRODUCED WITHOUT WRITTEN AUTHORIZATION OF CAMERON GREAT LAKES., INC.			
DIMENSIONAL TOLERANCE = +/- 0.030 IN.			
REV.	DATE	BY	REMARKS
--	05/23/00	JMB	ORIGINAL ISSUE



CAMERON GREAT LAKES, INC.

2335 NW 29th AVE
TEL: 800-777-4044

PORTLAND, OR 97210
FAX: 503-225-0137

DRAWN: JMB
CHECKED: PJJ
APPROVED: RAH

TITLE: CGL MODEL FA-2000
FRONT ACCESS CARBON
FILTER TRAY HOUSING

SCALE: N.T.S. DWG NO. FA-2000